

ENGINEERING PLANT LIST

Innovate | Engineer | Deliver

Precision Engineering

“Timelines can be tight on new product innovation, but we can rely on SRM to deliver the product on time and provide communication every step of the way. This enables us to keep our customers informed of progress. SRM Industries have become a valuable part of our supply chain”

Our ISO 9001:2015 approved engineering division specialises in the manufacture of low-to-medium volume precision-engineered items, manufactured from a wide variety of materials.

We have built strong relationships with maintenance departments across a wide range of industries in order to cater for repairs, replacements and one-off manufacture with fast turnaround.

We have recently invested in new technology, including 4-axis CNC machining centres and slant bed CNC turning centres with C-axis, enabling us to mill and turn simultaneously. This has allowed us to move into the medium-volume market and take on CNC milling and turning batch work, opening up new markets and increasing our range of capabilities.

We manufacture rubber injection and compression tooling not only for our own moulding division, but also for other moulding companies, using only the best quality steels. Prototype tooling can be machined using high grade Aluminium to allow faster milling and cycling, and is most commonly used in areas of research and development.

We can offer assistance with product design; our highly experienced staff are fully trained in Solidworks, and our milling and turning centres are all CAD/CAM-linked to meet current design technology.

Additionally we have machinery capable of manual operation, which allows us to work directly from sample parts and reverse engineer them into new products.

MATERIALS USED

FERROUS:

- Carbon Steel
- Tool Steel
- Alloy Steel

NON-FERROUS:

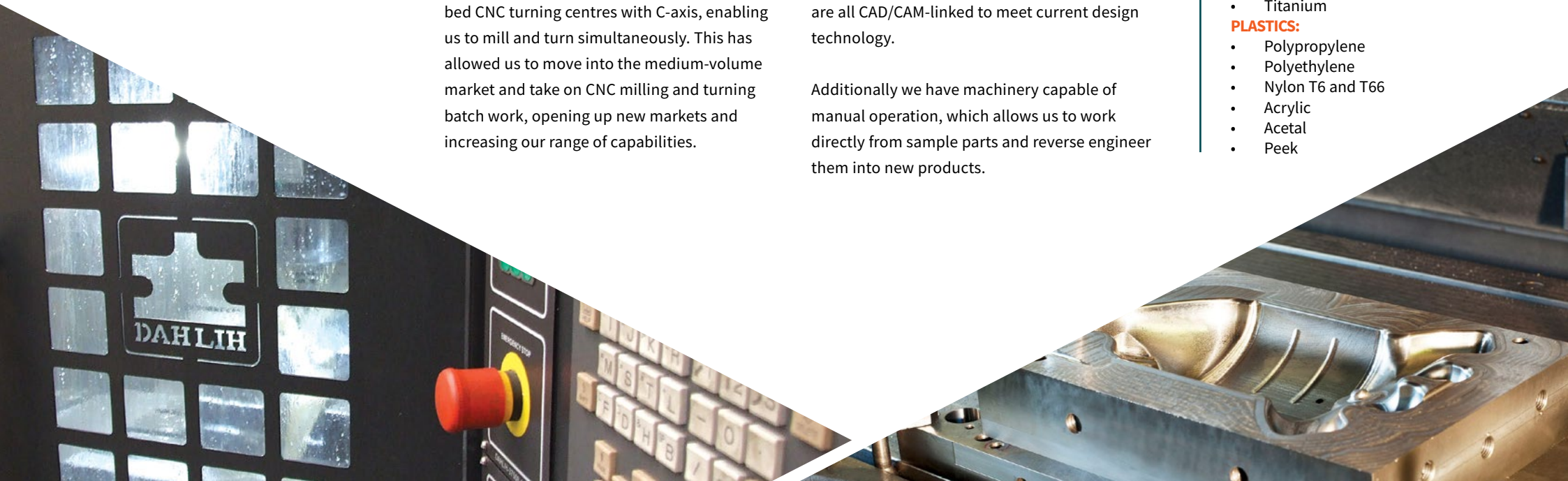
- Aluminium
- Copper
- Stainless Steel
- Bronze

EXOTICS:

- Nickel Alloys
- Inconel
- Titanium

PLASTICS:

- Polypropylene
- Polyethylene
- Nylon T6 and T66
- Acrylic
- Acetal
- Peek



Innovate | Engineer | Deliver

XYZ RMX 3500

3 Axis CNC Bed Mill

BED MILLS ARE ESSENTIAL FOR WHEN 3 AXIS CNC MACHINING IS REQUIRED. THE SMX 3500 CNC MILLING MACHINE OFFERS 530MM OF PROGRAMMABLE 'Z' TRAVEL YET KEEPING THE VERSATILITY OF A SWIVEL HEAD AND MANUAL QUILL.

STANDARD EQUIPMENT

ProtoTRAK RMX Touch Screen Control
Advanced Features
2 & 3 Axis RMX CNC Control
4 Axis DRO (Quill & Head Interlinked)
Precision Ground Ballscrews
Programable Spindle Speeds
Hi/Lo Gear Ranges
Auto Lubrication

SPECIFICATION

Spindle	5HP Programable Spindle Speed
Spindle Speeds	40 - 5000rpm
Speed Ranges	2 Ranges (40-600 & 300-5000rpm)
Spindle Taper	ISO 40
Quill Diameter	105mm (4.13")
Table Size	1370mm X 355mm (54" x 14")
X Axis Table Travel	787mm (31")
Y Axis Table Travel	508mm (20")
Head Vertical Travel	500mm (19.7)
Quill Travel	127mm (5")
Head Tilt Left to right	+45° / -45°
Max Throat Depth	520mm (20.47")
Max Table Load	600Kg



Innovate | Engineer | Deliver

XYZ RMX 4000

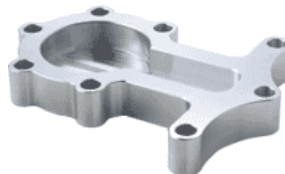
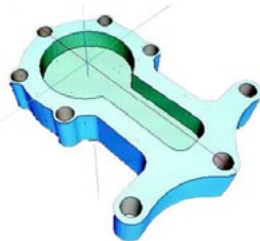
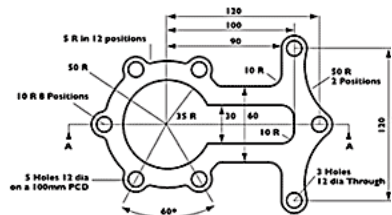
3 Axis CNC Bed Mill

STANDARD EQUIPMENT

ProtoTRAK RMX Touch Screen Control
Advanced Features
2 & 3 Axis RMX CNC Control
4 Axis DRO (Quill & Head Interlinked)
Precision Ground Ballscrews
Programable Spindle Speeds
Hi/Lo Gear Ranges
Auto Lubrication

SPECIFICATION

Spindle	7.5HP Programable Spindle Speed
Spindle Speeds	40 - 5000 RPM
Speed Ranges	2 Ranges (40-600 & 300-5000rpm)
Spindle Taper	ISO 40
Quill Diameter	116mm (4.56")
Table Size	1474mm X 355mm (58" x 14")
X Axis Table Travel	1016mm (40")
Y Axis Table Travel	596mm (23.46")
Head Vertical Travel	584mm (23")
Quill Travel	140mm (5.5")
Head Tilt Left to right	+45° / -45°
Max Throat Depth	610mm (24.1")
Max Table Load	850Kg



ProtoTRAK RMX
Touch Screen Control



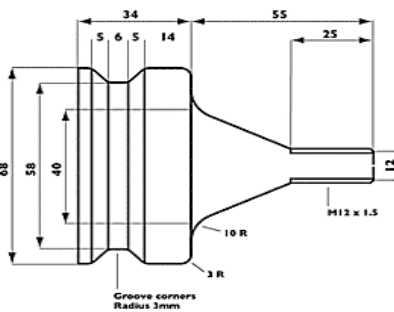
XYZ RMX 355 Straight Bed Lathe

STANDARD EQUIPMENT

- Bison T2 Quick Change Tool post & Six Holders
- 3 Jaw 200mm Diameter Steel Chuck
- Tailstock
- Joystick Control for Rapid Movement
- Auto Lubrication
- Electromagnetic Spindle Brake

SPECIFICATION

Spindle	7.5HP Variable Spindle Speed with Yaskawa Inverter Drive
Spindle Speeds	50 - 4,000rpm
Spindle Bore	52mm
Spindle Nose	D1-6 Camlock
Speed Ranges	2 Ranges High 100 - 4,000rpm Low 50 - 1,410rpm
Spindle Taper	MT4 in bush
Swing Over Bed	360mm
Swing over Cross Slide	225mm
Cross Slide Travel	185mm
Distance between Centres	1000mm
Maximum Cutting Length	900mm
Tailstock Travel	150mm
Tailstock Taper	MT4
Tailstock Diameter	60mm
Bed Width	300mm



Innovate | Engineer | Deliver

DAHLIH MCV-1060

SPECIFICATION

Fanuc Oi-MF Control
10.4" Colour LCD
Manual Guide i
AICC II 400 block look ahead function
8,000 rpm spindle, 11 kW
20 Bar through spindle coolant
X = 1060mm Y=560mm, Z= 550mm
CAM type ATC, 30 tools
Fully enclosed guarding
Flat type swarf auger (Front left side discharge)
Air / Oil Gun
Oil Skimmer
Bed wash
BBT40



Innovate | Engineer | Deliver

DAHLIH MCV-1250

SPECIFICATION

Fanuc 0i-MF Control
10.4" Colour LCD
Manual Guide i
AICC II 400 block look ahead function
6,000 rpm spindle, 22 kW
20 Bar through spindle coolant
640M Fanuc memory
Hydraulic type, 24 tools
Fully enclosed guarding
Flat type Chip Conveyor (Front left discharge)
Air / Oil Gun
Oil Skimmer
Bed wash
X=1250mm, Y=650mm, Z=700mm
BBT50





Hwacheon Turning Centre 200C (L) MC

SPECIFICATION

Specifications:

NC Controller:	Fanuc Oi-TB
Spindle Motor:	11 HP
Max Spindle Speed:	3,500 RPM
Taper:	MT#4
Chucksize:	254mm
Turning Diameter:	350mm
Machining Length:	630mm
Number of tool station:	10
Rapid Speed (X / Z) mm/min:	30/30
Max. Stroke (X / Z)mm:	195/660
Turn Mill Spindle Motor kW(HP):	3.7/2.2
Min. Index Angle (deg):	0.0001 (deg)



Innovate | Engineer | Deliver

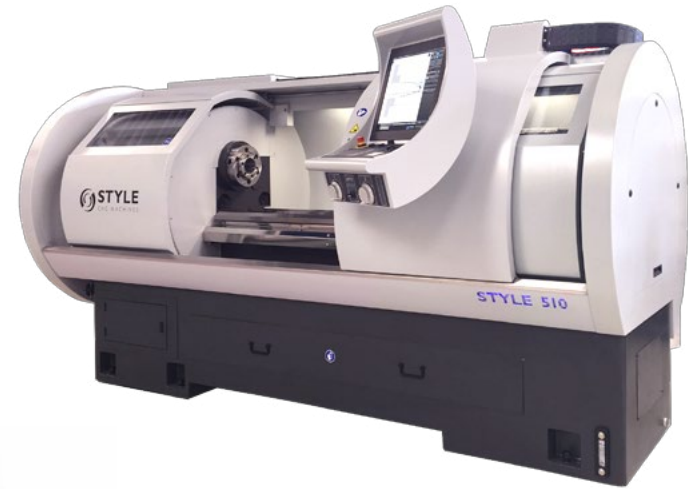
Style CNC

510 X 1500

OVERVIEW

The Style CNC 510 is ideal for repair and replace engineering and for one offs due to its quick processing and setup time and manual operation.

The Style has a Maximum Turning length of 500mm and is typically used to produce replacement shafts, couplings and flanges.





Innovate | Engineer | Deliver

FULL PLANT LIST

XYZ RMX 3500

XYZ RMX 4000

XYZ RLX 355

DAHLIH MCV 1060

DAHLIH MCV 1250

HWACHEON TURN CENTRE 200C (L) CW

STYLE CNC 510 X 1500

SWIFT 2 AXIS MILL

HARRISON V390

HARRISON M500

MYFORD GRINDER J



t: +44(0)1283 814411 | e: sales@srm-industries.com | www.srm-industries.com
Castle View Industrial Estate, Station Road, Hatton, Derbyshire, DE65 5EL, UK